

Application:

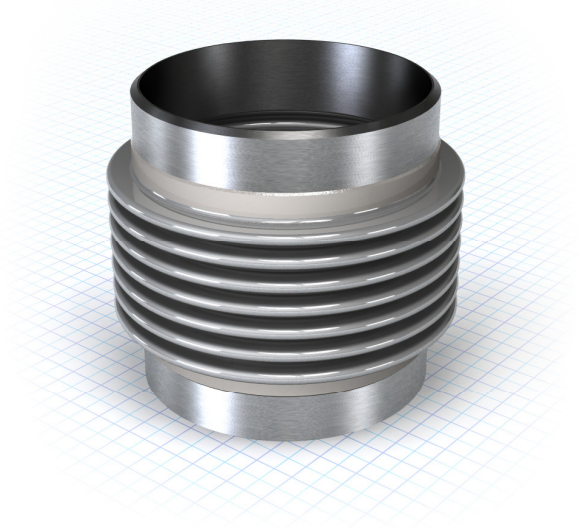
Stainless steel expansion joint for compensating movements and misalignments in dry exhaust systems.
Maximum operating temperature +550 °C, maximum working pressure 2,5 bar (20 °C).

Description:

Stainless steel expansion joint AISI 321. Double ply bellows.
Carbon steel weld ends.

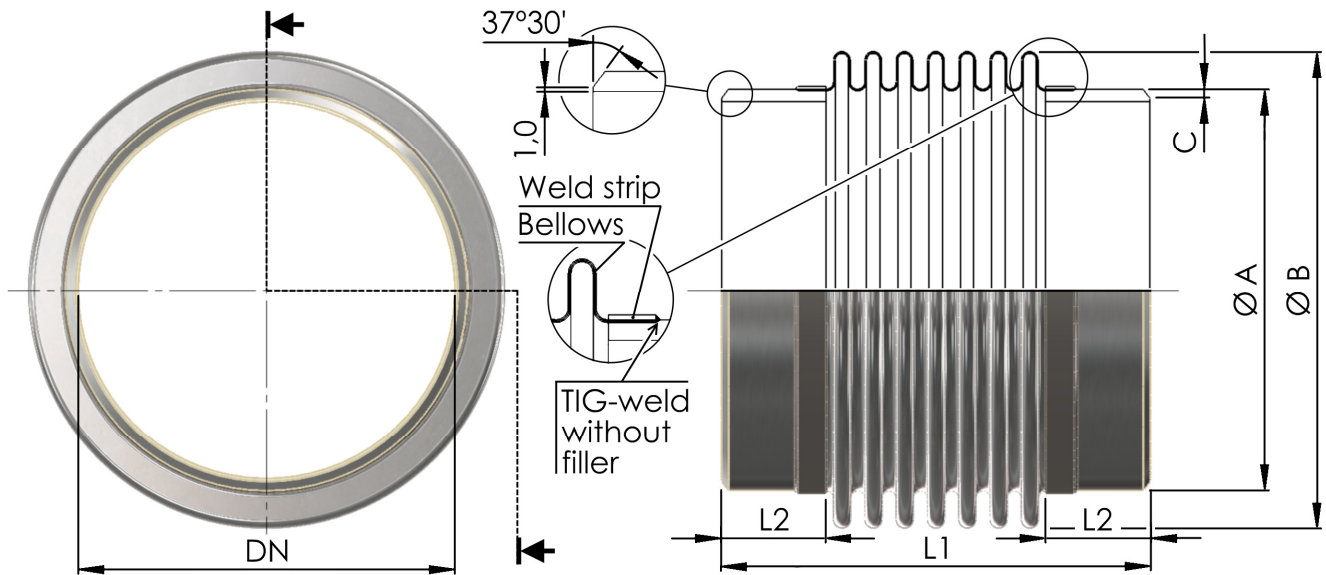
Construction and Design:

- Stainless steel expansion joint AISI 321
- Short length
- Double ply bellows material
- Short length
- Carbon steel weld ends
- Max. temperature: 550 °C
- Max. pressure: 2,5 bar (20 °C)
- Stock item

**Approvals:**

BUREAU VERITAS





Technical data:

Article no.	DN	L1	Bellows (Material: AISI 321)			Welding ends (Material: Carbon steel)			Movements		Springrate	
			B	Plies	Thickness	A	C	L2	mm		N/mm	
									Axial +/-	Lateral +/-	Axial +/-	Lateral +/-
330 040 040	40	150	60,3	1	0,3	48,3	2,6	30	25	8	47	89
330 040 050	50	150	78,3	2	0,3	60,3	2,9	30	25	8	68	166
330 040 065	65	150	96,7	2	0,3	76,1	2,9	30	25	8	56	169
330 040 080	80	150	109,7	2	0,3	88,9	3,2	30	25	8	63	219
330 040 100	100	150	140,5	2	0,3	114,3	3,6	37	25	6	59	293
330 040 125	125	150	165,7	2	0,3	139,7	3,6	35	25	5	71	420
330 040 150	150	150	200,5	2	0,3	168,3	4,0	35	25	5	56	389
330 040 200	200	150	251,1	2	0,3	219,1	4,5	35	25	5	69	608
330 040 250	250	150	305,2	2	0,3	273,0	5,0	35	25	4	86	933
330 040 300	300	150	360,9	2	0,3	323,9	5,6	35	25	4	81	1042

Subject to alteration

Movements are not in combination

Loggers b.v.

Mail: P.O. Box 194 3300 AD Dordrecht The Netherlands
 Office: Pieter Zeemanweg 133 3316 GZ Dordrecht The Netherlands
 Tel. +31(0) 78 618 28 44
 Fax. +31(0) 78 618 06 50
 Email: sales@loggers.nl
 Internet: www.loggers.nl

Loggers Schwingungstechnik GmbH

Mail and office:
 Am Markt 9 D-27419 Sittensen Germany
 Tel. +49(0) 4282 5949 0
 Fax. +49(0) 4282 5949 39
 Email: sales@loggers.de
 Internet: www.loggers.de