

Application:

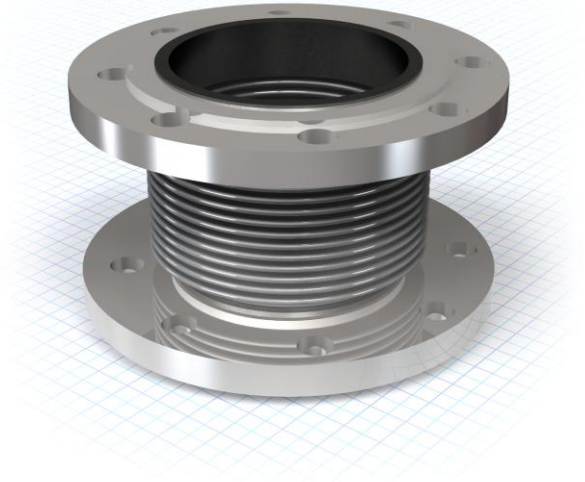
Stainless steel expansion joint for compensating movements and misalignments in pipeline systems.
Maximum operating temperature +300 °C, maximum working pressure 16 bar (20 °C).

Description:

Stainless steel expansion joint AISI 321. Double ply bellows.
With galvanised swivelling carbon steel flanges acc. DIN
PN16.

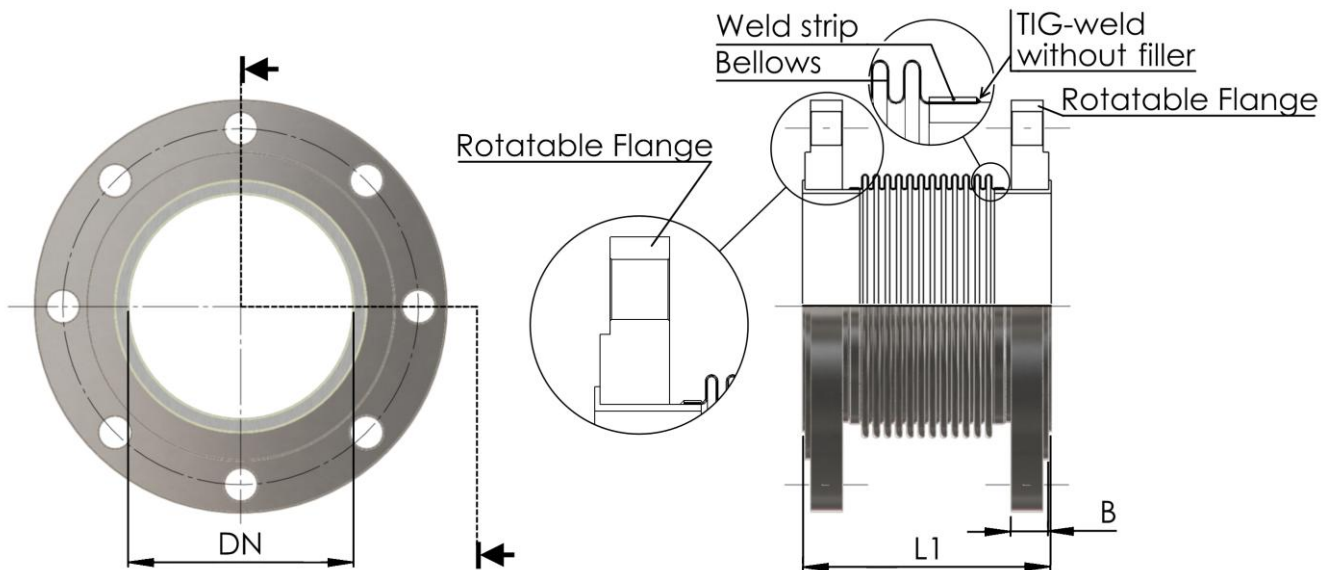
Construction and Design:

- Stainless steel expansion joint AISI 321
- With galvanised swivelling carbon steel flanges acc. DIN PN16
- Double ply bellows material
- Standard length L=130
- Max. temperature: 300°C
- Max. pressure: 16 bar (20°C)
- Stock item

**Approvals:**

BUREAU VERITAS





Technical data:

Article no.	DN	L	Bellows (Material: AISI 321)			Flange (Carbon steel) Dimensions mm					Movement Axial	Springrate N/mm
			Conv.	Plies	Thick- ness	D outside	K	D inside	Holes x d	B		
300 231 040	40	130	20	1	0,3	150	110	48,3	4 x 18	16	± 15 - 30 mm	82
300 231 050	50	130	16	2	0,3	185	125	60,3	4 x 18	18	± 15 - 30 mm	60
300 231 065	65	130	14	2	0,3	185	145	76,1	4 x 18	18	± 15 - 30 mm	50
300 231 080	80	130	13	2	0,3	200	160	88,9	8 x 18	20	± 15 - 30 mm	41
300 231 100	100	130	12	2	0,3	220	180	114,3	8 x 18	20	± 15 - 30 mm	37
300 231 125	125	130	12	2	0,3	250	210	139,7	8 x 18	22	± 15 - 30 mm	35
300 231 150	150	130	12	2	0,4	285	240	168,3	8 x 22	22	± 15 - 30 mm	69
300 231 200	200	130	8	2	0,4	340	295	219,1	12 x 22	24	± 15 - 30 mm	95
300 231 250	250	130	7	2	0,4	405	355	273,0	12 x 22	26	± 15 - 30 mm	83

Subject to alteration

Movements are not in combination

Loggers b.v.

Mail: P.O. Box 194 3300 AD Dordrecht The Netherlands
Office: Pieter Zeemanweg 133 3316 GZ Dordrecht The Netherlands
Tel. +31(0) 78 618 28 44
Fax. +31(0) 78 618 06 50
Email: sales@loggers.nl
Internet: www.loggers.nl

Loggers Schwingungstechnik GmbH

Mail and office:
Am Markt 9 D-27419 Sittensen Germany
Tel. +49(0) 4282 5949 0
Fax. +49(0) 4282 5949 39
Email: sales@loggers.de
Internet: www.loggers.de